

TRIPLE NICKLE - 90 MILES

Overview:

No attractions or lunch stops here - just you and the Windy 9's featured route, Ohio State Route 555. We'll just let the Triple Nickle take it from here! The entire route begins in Athens and ends in South Zanesville. Of course, riding it back to Athens would make it the Double Triple Nickle.....

Directions: All directions originate from Athens County Visitors Bureau, 667 E. State St., Athens)

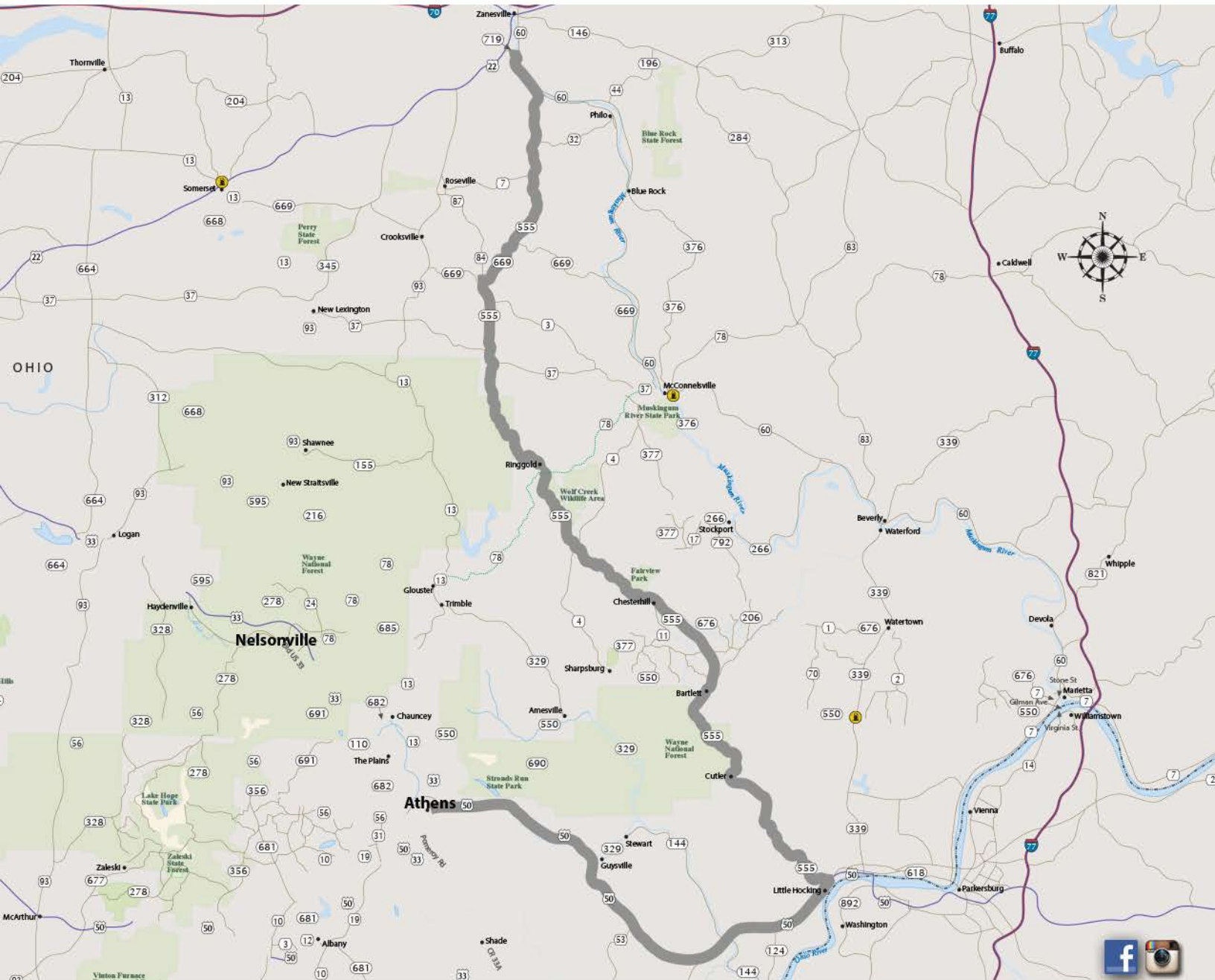
L on E State St.

L on 33 E

Exit to 50/32 E

L on State Route 555 (Bartlett Exit)

Attractions: The road. Keep your eyes on the road...



windy9.com / athensohio.com / [#windy9](https://twitter.com/windy9)